



BUILDING SOUCIE

2 et 6, boulevard Desaulniers, St-Lambert, Québec

OFFICE SPACE FOR RENT

Approximately 730 sq ft



Landmark building of St-Lambert's commercial district

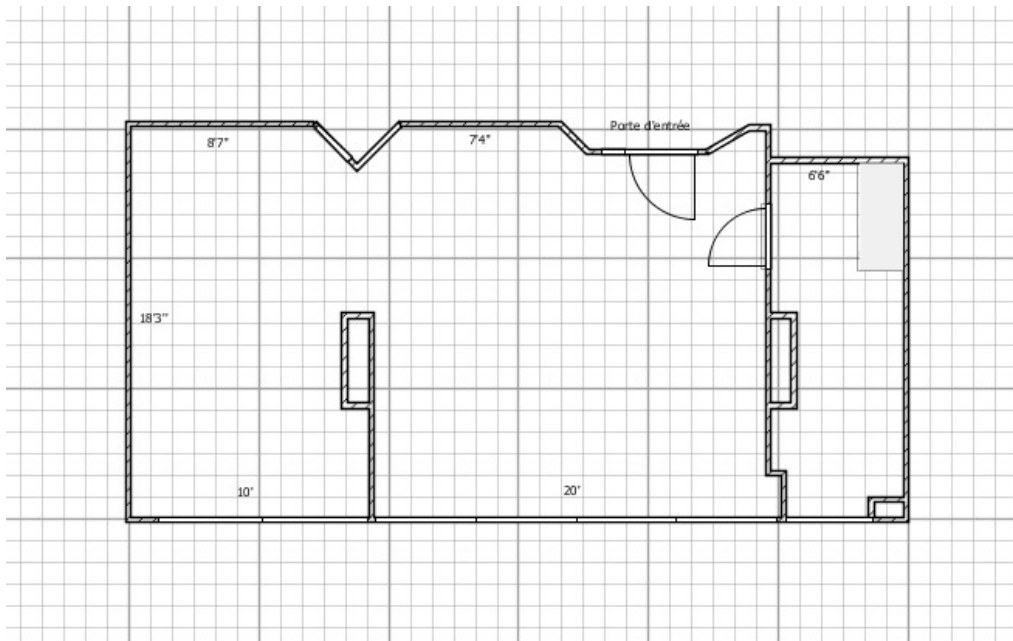
High volume of customers due to strategic location of the building with instant access to Victoria bridge and Highway-132; minutes away from downtown Montreal

Direct access to abundant amenities such as great restaurants, cafés, boutiques, banking services, etc.

Office space of 730 ft² divided into one big open space and a secure storage room

Available now / Visits are made in respect with public health recommendations

SPACE PLAN





BUILDING SOUCIE

2 et 6, boulevard Desaulniers, St-Lambert, Québec

OFFICE SPACE FOR RENT

Approximately 730 sq ft

MORE INFORMATION

CHARACTERISTICS

- Located on the 1st floor of a 6 storey building with a terrasse on the roof
- Beautiful natural light, many windows
- Space ready to be fitted out

ADVANTAGES

- Office space of 730 ft2 divided into one big open space and a secure storage room
- Gross and competitive rate including heating, cooling, electricity, municipal and business taxes, cleaning service and operating costs
- located on the 1st floor of a corporate-looking building

NEIGHBORHOOD

- Health care professionals
- Specialized dental centers
- Law firms, financial specialists
- Businesses at street level



REAL-ESTATE OWNERS &
MANAGER

2, Desaulniers Boulevard, Suite 102
Saint-Lambert, Quebec J4P 1L2

T. 450-671-3111
www.brixix.ca

FOR INFORMATION

Malika Brixix
malika.brixix@brixix.ca

T. 450-671-3111