



LE RICHELIEU

370, chemin de Chambly, Longueuil, Quebec

OFFICE SPACE FOR RENT

Approximately 792 sq ft



Located in the much sought-after commercial district of the Vieux-Longueuil

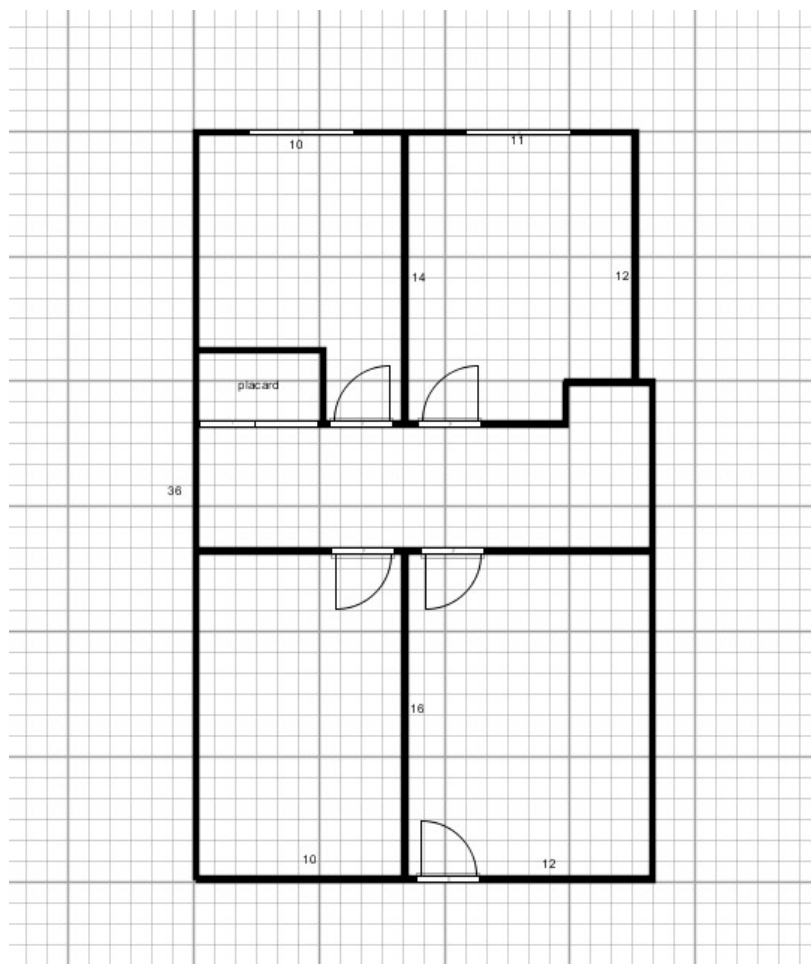
Exceptional accessibility to Highway-132 and Jacques-Cartier bridge; efficient public transit network to Métro Longueuil Terminal

Location where life is enjoyable! Easy access to abundant amenities such as city parks, numerous restaurants with terraces for your business lunches, banking services, and much more!

792 ft2 / Turnkey space ideal for sel-employed and/or SME

Visits are made in compliance with public health recommandations.

SPACE PLAN





LE RICHELIEU

370, chemin de Chambly, Longueuil, Quebec

OFFICE SPACE FOR RENT

Approximately 792 sq ft

MORE INFORMATION

CHARACTERISTICS

- Turnkey space ideal for self-employed and/or SME
- Fenestrated
- Space located on the 2nd floor of a total of 4
- Competitive rate
- Quiet neighbourhood made up of professionals

ADVANTAGES

- Corporate-looking building
- Gross price including heating, air conditioning, municipal and business taxes, daily housekeeping and operating costs
- Building entrance with universal access and elevator
- Building managed with care by its owner-managers
- Vast exterior parking lot

NEIGHBORHOOD

- Grouping of professionals
- Notary's office
- Consultants
- Accounting firm



REAL-ESTATE OWNERS &
MANAGER

2, Desaulniers Boulevard, Suite 102
Saint-Lambert, Quebec J4P 1L2

T. 450-671-3111
www.brixix.ca

FOR INFORMATION

Malika Brixix
malika.brixix@brixix.ca

T. 450-671-3111