



## RICHELIEU BUILDING

370, chemin de Chambly, Longueuil, Quebec

### OFFICE SPACE FOR RENT

Approximately 795 sq ft



Located in the much sought-after commercial district of the Vieux-Longueuil

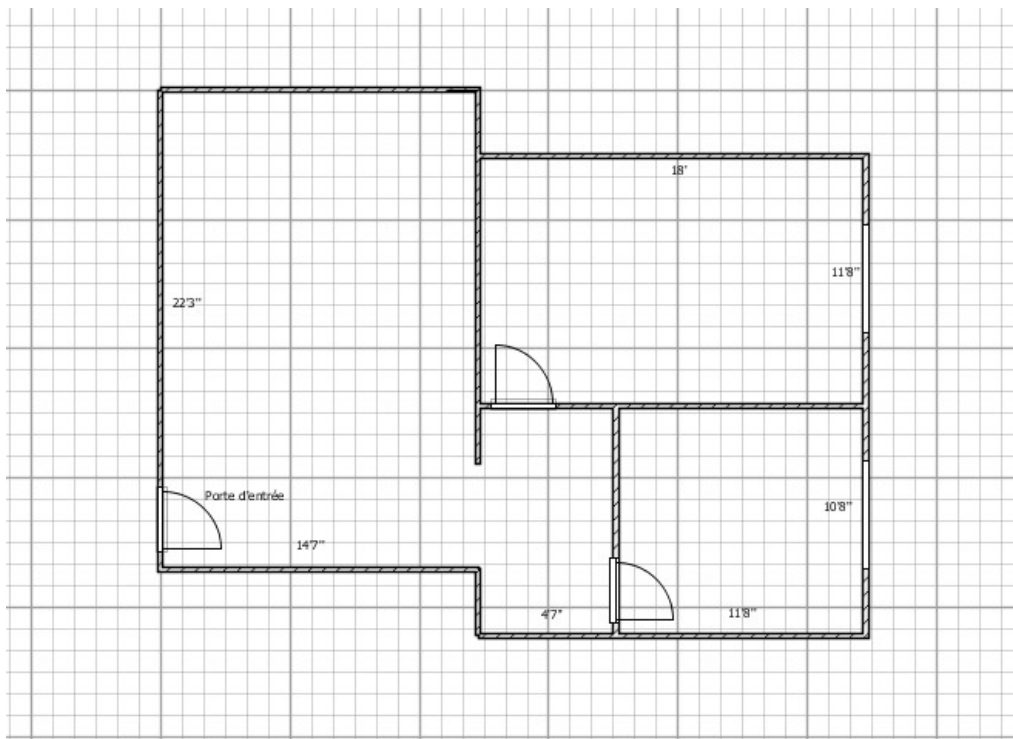
Exceptional accessibility to Highway-132 and Jacques-Cartier bridge; efficient public transit network to Métro Longueuil Terminal

Location where life is enjoyable! Easy access to abundant amenities such as city parks, numerous restaurants with terraces for your business lunches, banking services, and much more!

795 ft2 of mixed layout: open space and 2 closed offices  
Ideal for self-employed, professionals and/or SME

Visits are made on appointment from Monday to Friday, during business hours. 3 to 5 years Leases.

## SPACE PLAN





## RICHELIEU BUILDING

370, chemin de Chambly, Longueuil, Quebec

### OFFICE SPACE FOR RENT

Approximately 795 sq ft

## MORE INFORMATION

### CHARACTERISTICS

- 795 ft2 of Mixed layout: open space and 2 closed offices with windows
- Space located on the 4th floor: universal entrance, elevator, 4-storey building
- Turnkey, Ideal for professionals and/or SME
- Beautiful natural light
- Private parking lot for Tenants and costumers

### ADVANTAGES

- Corporate looking building (B Class)
- Very competitive rate
- Gross rate including heating, cooling, municipal taxes, daily cleaning service, operating costs of the building
- Building administrated by its owner-managers
- Quiet and professional neighborhood

### NEIGHBORHOOD

- Grouping of professionals
- Notary's office
- Consultants
- Accounting firm



REAL-ESTATE OWNERS &  
MANAGER

2, Desaulniers Boulevard, Suite 102  
Saint-Lambert, Quebec J4P 1L2

T. 450-671-3111  
[www.brixix.ca](http://www.brixix.ca)

### FOR INFORMATION

**Malika Brixix**  
[malika.brixix@brixix.ca](mailto:malika.brixix@brixix.ca)

T. 450-671-3111